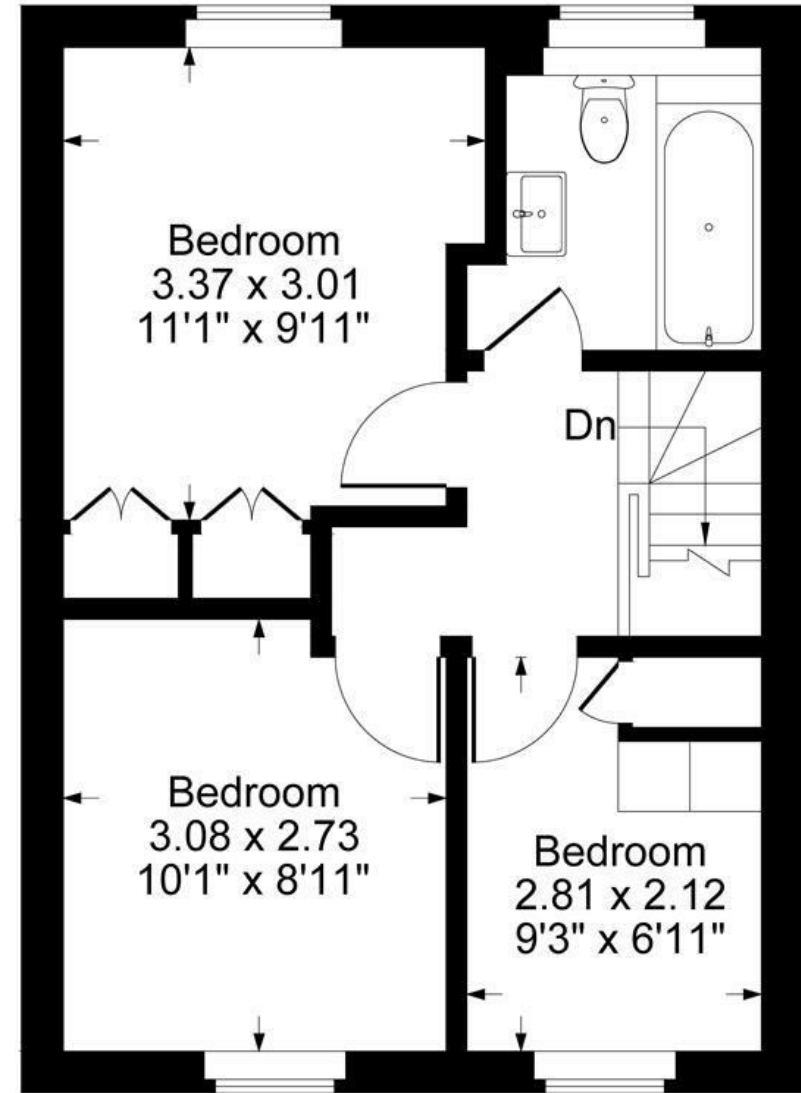
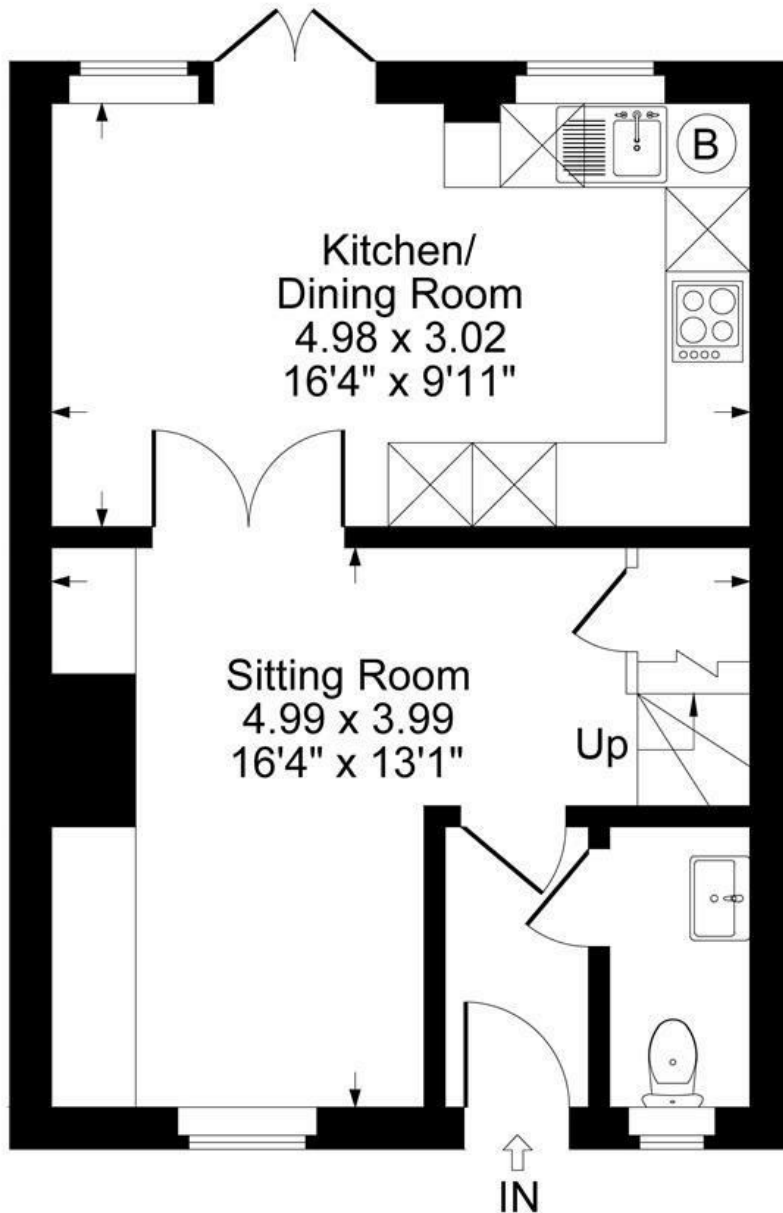




FAIRFAX
— & Co —
ESTATE AGENTS

London Road, Chipping Norton



Ground Floor

First Floor

Approximate Gross Internal Area
Ground Floor = 35.65 sq m / 384 sq ft
First Floor = 35.65 sq m / 384 sq ft
Total Area = 71.30 sq m / 768 sq ft

Illustration for identification purposes only,
measurements are approximate, not to scale.

The Property

A charming and beautifully renovated three-bedroom Cotswold cottage, ideally positioned in the heart of Chipping Norton, offering an elegant blend of classic and contemporary style.

This delightful home was thoughtfully updated to an exceptional standard in 2021, showcasing high ceilings, engineered oak flooring, and stylish brass light fittings and electrical sockets throughout. The ground floor features a well-proportioned sitting room, complete with traditional cast iron feature radiators, adding both warmth and timeless character. Striking Crittall-style French doors open seamlessly onto a south-facing garden, creating an oasis of calm, perfect for relaxing or entertaining.

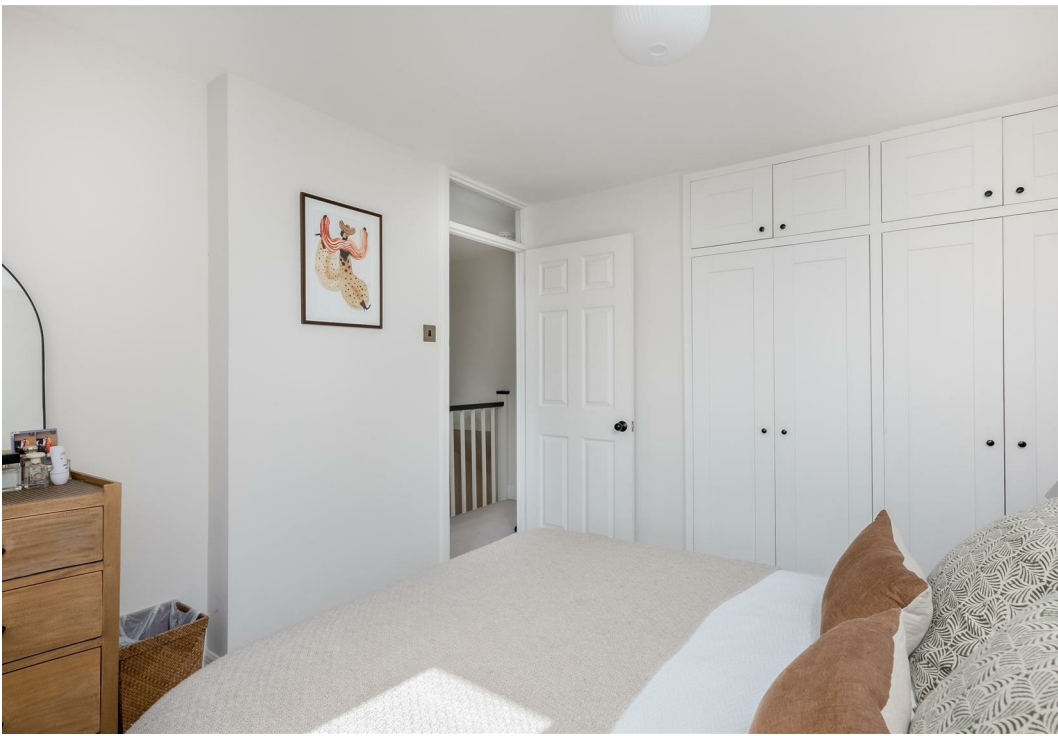
The property further benefits from a modern shaker-style kitchen with quartz worktops and a convenient downstairs loo. Upstairs, there are three well-proportioned bedrooms and a beautifully appointed family bathroom, all finished to a high specification. The home is enhanced by double glazing throughout, ensuring excellent insulation, comfort, and energy efficiency year-round.

Ideally located just moments from local amenities, and offering off-street parking, this attractive cottage is perfectly suited as a stylish first home, a charming holiday let or Airbnb investment, or an ideal downsizing opportunity without compromising on quality or location.

The Situation

The bustling historic wool town of Chipping Norton is situated on the edge of the Cotswold Hills between the University City of Oxford, Spa town of Cheltenham & Shakespeare's Stratford upon Avon. It has a range of shopping, social and business facilities including an excellent local theatre, sports centre with indoor pool, lido and a Community Hospital + Health Centre. A Station on the Paddington to Worcester rail line can be found at nearby Kingham in addition to a regular bus service from Chipping Norton to Oxford. Local leisure options include a sports club, tennis courts, and attractions like Soho Farmhouse and Daylesford Organic Farm within easy reach.







**1 Church Street
Charlbury
Oxfordshire
OX7 3PW
Telephone: 01608 811146**

**10 Market Place
Chipping Norton
Oxfordshire
OX7 5NA
Telephone: 01608 644808**